

RE RUBA ENGINEERING
THE FUTURE EVOLUTION

RUBA ENGINEERING **PROFILE**



www.rubaengineering.com



K.SELVAN is the visionary founder of RUBA ENGINEERING, established in 2005. With a robust background in engineering and project management, he has dedicated over three decades to the construction and engineering industry. Under his leadership, RUBA ENGINEERING has emerged as a highly respected name in the fields of Pre-Engineered Buildings (PEB), power plants, cement plants, and infrastructure development.

Driven by a passion for excellence and innovation, K. Selvan has been instrumental in shaping the company's strategic direction and operational efficiency. His hands-on approach and commitment to quality have fostered a culture of continuous improvement within the organization. He believes in the power of teamwork and collaboration, which has helped to build a strong, skilled workforce dedicated to delivering exceptional results for clients.



K SELVAN
FOUNDER & DIRECTOR





ABOUT US

Established in 2005, **RUBA ENGINEERING** has become a recognized leader in providing high-quality solutions across various industries. With a commitment to excellence and an unwavering dedication to meeting client needs, we have established a strong reputation and a growing client base across the nation. Headquartered in Chennai and operating as a Sole Proprietorship, RUBA ENGINEERING offers a wide range of services that span across multiple sectors.

We specialize in **Pre-Engineered Buildings (PEB), power plants, cement plants, infrastructure development, and turnkey projects.** Our multidisciplinary expertise allows us to provide comprehensive solutions tailored to the specific requirements of each client. Whether it's in the fields of **design, detail engineering, fabrication and erection works** and we stand out for its **precision, innovation, and reliability.**

Our team of **experienced professionals** is dedicated to delivering projects that not only meet but exceed industry standards. With a focus on **quality, safety, and timely execution**, RUBA ENGINEERING has successfully completed numerous projects across India, helping clients achieve their goals efficiently and effectively.

VISION

At RUBA ENGINEERING, our vision is to become the **most respected and prominent service provider in the engineering and construction industry**. We strive to be recognized for our unwavering dedication to excellence in every aspect of our work, from design and engineering to execution and client service.

We aim to lead the industry through our **consistent track record of delivering exceptional quality and service**. Our goal is to build a reputation that sets us apart, driven by a team of professionals who embody the values of safety, precision, and reliability.

We are committed to developing the industry's best lineup of **dynamic and skilled individuals who are passionate about exceeding client expectations**. Our focus on timely project completion and value-driven solutions positions us as a trusted partner in the engineering and construction landscape.

MISSION

At RUBA ENGINEERING, our mission is to set a new industry standard for quality, craftsmanship, safety, and technical support—all at a competitive price.

Clients satisfaction is our top priority, and delivering exceptional results at every stage of each project.

We work diligently to ensure that every client receives our **full attention and focus throughout their project's lifecycle**. Our work environment fosters sustainable development, encourages individual growth, and promotes team integrity, enabling us to consistently deliver excellence.

WHY PEOPLE CHOOSE US!

01

QUALITY

We are committed to delivering top-notch quality in every project, ensuring precision and excellence at every stage. Our attention to detail and craftsmanship set us apart in the industry.

02

LEADERSHIP AND ACCOUNTABILITY

Our team is driven by experienced leaders who prioritize accountability and transparency. We take full responsibility for delivering projects on time and within budget, while maintaining the highest standards.

03

ETHICAL

At Ruba engineering we strive to operate in accordance with the rules and standard codes for right conduct for engineering and environmental professionals. We believe that honesty and integrity are vital characteristics of any company culture to maintain credibility.

04

CLIENT-CENTRIC APPROACH

We place our clients at the heart of everything we do, ensuring their needs and expectations are met with personalized attention and tailored solutions.

OUR CLIENTS



OUR ARCHITECTS & ASSOCIATES





At RUBA ENGINEERING, safety is at the heart of everything we do. We are committed to ensuring that every project is carried out with the utmost care, prioritizing the well-being of our team and clients. Safety is not just a requirement—it's our responsibility and core value.

- **K.SELVAN** Founder

OUR INTERNAL SAFETY PROGRAM INCLUDES:

1. A daily job hazard analysis meetings.
2. All staff and team members are trained to look at safety before beginning any task to reduce risk.
3. All team members are routinely trained and updated on the best industry safety practices.
4. All new team members are extensively trained before beginning as an active member of ruba engineering team.
5. All team members are rewarded for operating in a safe and productive manner.
6. All team members hours are tracked diligently to prevent fatigue and mitigate the risks related to exhaustion or stress.

SAFETY

STANDARDS FOLLOWED

IS 800:2007: The Indian Standard for steel fabrication that outlines requirements for safety, design, production, construction, and quality

IS 7205: 1974: The safety code for erection of structural steel work

IS 7215: 1974: The tolerances for fabrication of steel structures

IS 8500: 1991: The weldable structural steel (medium and high strength)

ISO 10721: A standard followed by several structural steel fabricators

IS 456:2000: Code of practice for plain and reinforced concrete

IS 1200: Guidelines for measuring building and civil engineering works

IS (Indian Standard) Codes for PPEs and Safety equipment :

IS 3521: 1999: IS code of Safety Belt and Full body Harness

IS 2925: 1984: IS Code for Industrial safety helmet



**STRUCTURAL STEEL
FABRICATION & ERECTION**



**STORAGE TANK
FORMATION**



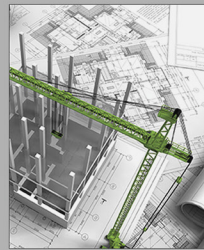
CIVIL CONSTRUCTION



MEP & PIPELINE



**FIRE PROTECTION
SYSTEM**



**DESIGN & DETAIL
ENGINEERING**



**STORAGE TANKS
REPAIRS & MAINTENANCE**



**BOILERS
REFURBISHMENT & OVERHAUL**



**SURFACE
PREPARATION & CLEANING**



**CERTIFIED & QUALIFIED
MANPOWER**

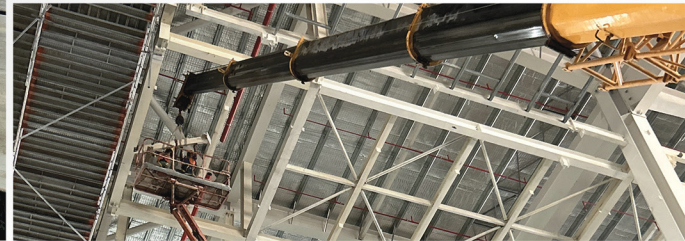
SERVICE OVERVIEW

STRUCTURAL STEEL FABRICATION & ERECTION

At Ruba Engineering, our Steel Fabrication & Erection Division delivers thousands of tons of premium-quality structural steel annually to clients across South India. Our work supports diverse industries, including construction, manufacturing, and infrastructure development.

We pride ourselves on using only the highest quality materials, including top-grade raw materials, fillers, and consumables, ensuring durability and superior performance. Our functional designs are meticulously crafted by experienced engineers, incorporating modern technology to meet the demands of today's marketplace.

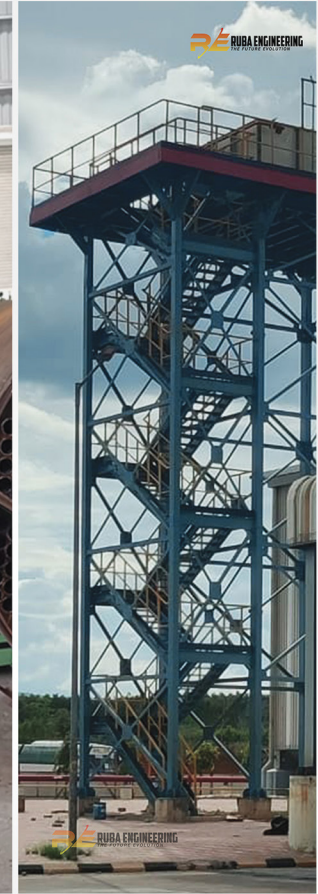
- STEEL FABRICATION
- ERECTION
- COATINGS
- PLATFORMS
- STAIRWAYS
- CAGED LADDERS
- RAILINGS
- HANDRAILS
- DUCTS AND HOPPER TRANSMITTER
- LOUVERS AND DAMPERS
- SCRUBBERS
- PROCESS PIPING & PRESSURE PARTS
- SQUARE STORAGE
- CONTAINMENT DUCTWORK
- CLADDING & ROOFING SHEET
- TRAY TOWERS
- CONVECTION BOXES
- MODULAR STEEL CONSTRUCTION
- SUPPORTS OF EQUIPMENT
- STACKS
- COLUMNS & TRUSS
- PRESSURE VESSELS
- FLARE TIPS
- BURNER ASSEMBLIES
- ABSORBERS
- AIR RECEIVERS
- FLOATING ROOFS
- STEEL RETROFIT APPLICATIONS



STORAGE TANK FORMATION & MAINTENANCE

We specialize in the design, fabrication, and erection of high-quality storage tanks for various **industries, including oil & gas, chemicals, water treatment, and manufacturing.** We build tanks in a wide range of capacities and materials, customized to meet your specific requirements.

Our storage tanks are constructed using **premium-grade materials, ensuring durability, corrosion resistance, and adherence to industry safety standards.** With a focus on precision engineering and expert craftsmanship, we handle everything from design and material selection to on-site installation, providing reliable, long-lasting storage solutions.



CIVIL CONSTRUCTION

We deliver high-quality civil construction services for **commercial and industrial projects**, adhering to strict industry standards and codes. Our construction projects comply with IS Codes (Indian Standards), including IS 456:2000 for concrete structures, IS 800:2007 for steel structures, and IS 1893:2016 for earthquake-resistant design.

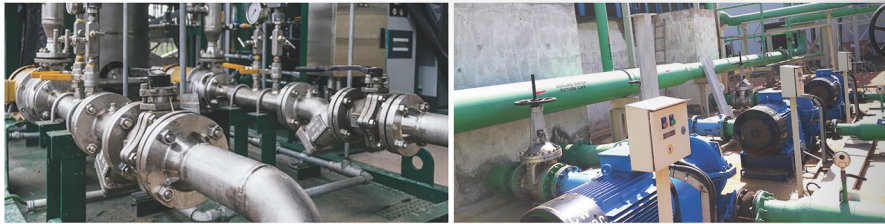
We prioritize safety, sustainability, and precision, ensuring the use of premium materials and modern construction techniques. Our team implements rigorous quality control measures throughout the project lifecycle, from foundation work to final finishes, meeting client expectations while ensuring on-time, budget-conscious delivery.



MEP AND PIPELINE

Ruba Engineering offers comprehensive MEP and pipeline services, ensuring to follow standard codes such as **NBC (National Building Code)** for building services, **IS 1239** and **IS 3589** for piping and **NFPA** standards for fire protection systems.

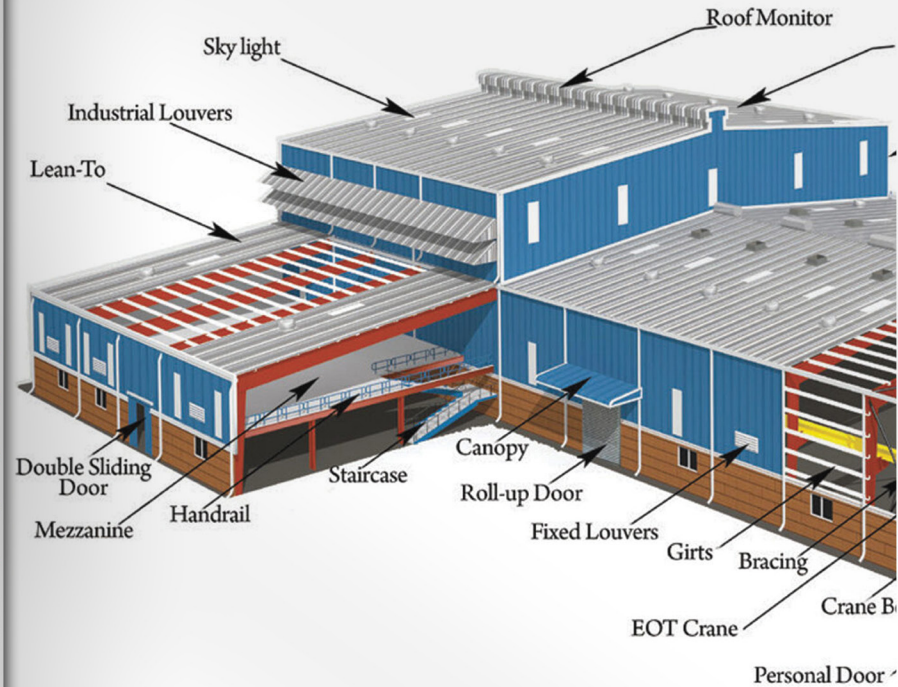
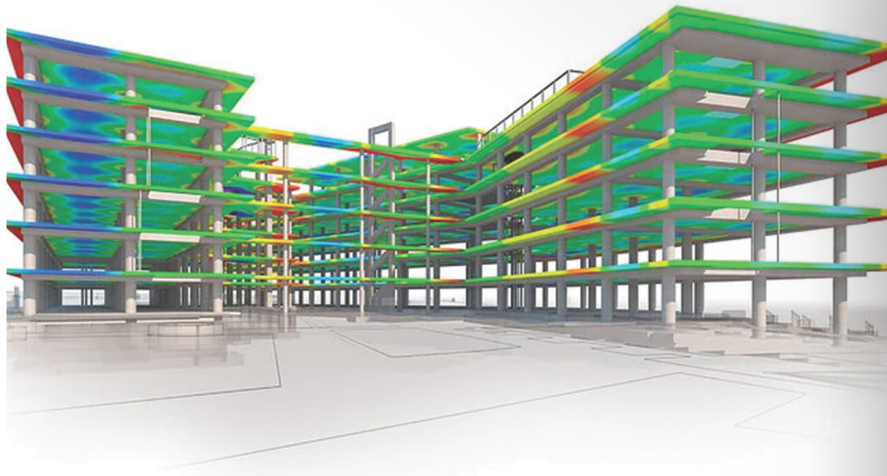
Our skilled team employs modern construction techniques, including 3D modeling and prefabrication, ensuring precision in installation, reducing on-site labor, and improving efficiency. We ensure that all systems—whether **HVAC**, **electrical**, **water supply**, or **industrial pipelines**—are installed safely, meet performance standards, and comply with stringent quality and safety regulations.

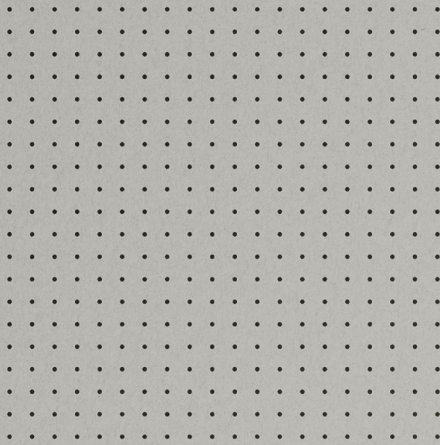


DESIGN & DETAIL ENGINEERING

At Ruba Engineering, our **Design and Detail Engineering** services are rooted in precision, innovation, and reliability. We provide tailor-made designs for industrial and commercial projects, ensuring that each solution.

Our team of expert engineers follows **Internationally recognized standards** such as **ASME, IS Codes, and AISC** to deliver structurally sound and compliant designs. Using **advanced 3D modeling and simulation tools**, we minimize errors and foresee potential challenges before construction begins, ensuring a flawless execution.





CONTACT US

+91 9840278217

+91 8825407469

selvan@rubaengineering.com

NO.4/21, MANALI NEW TOWN

CHENNAI -600103